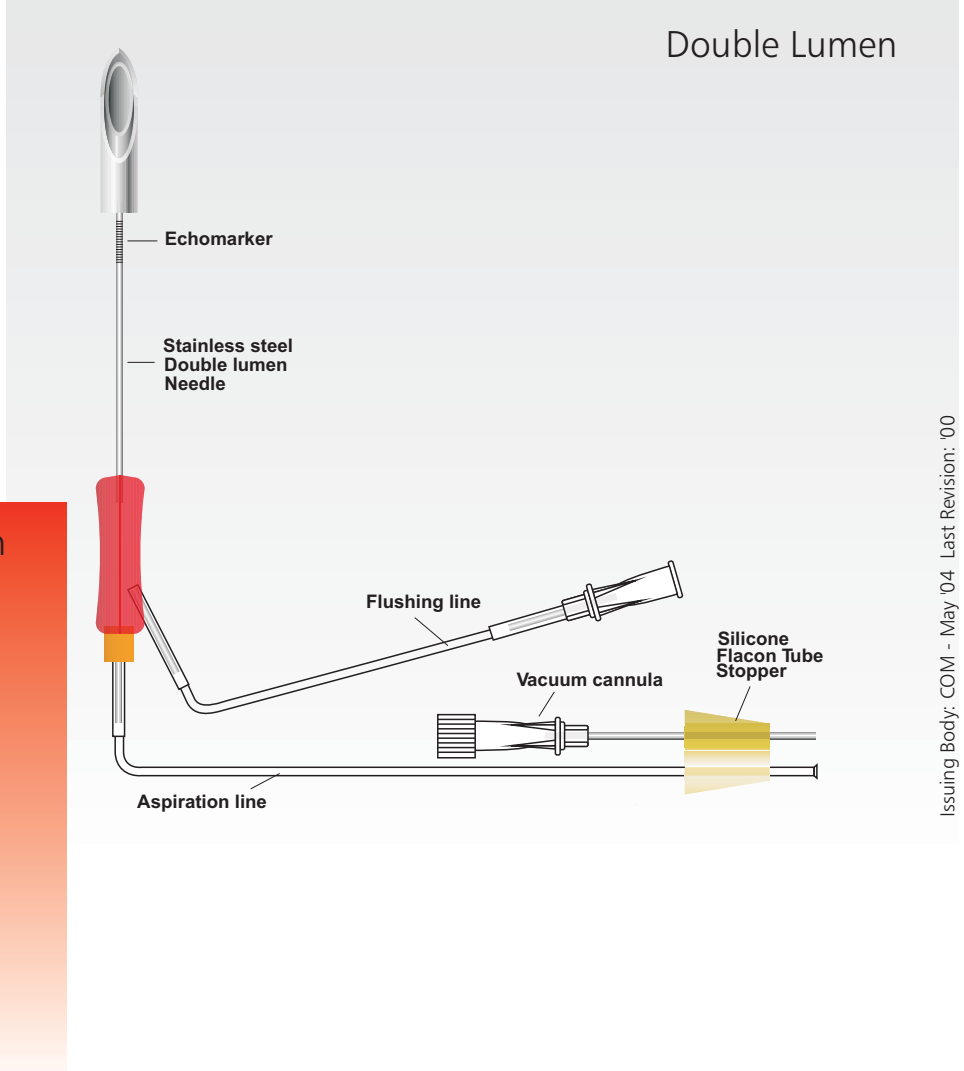
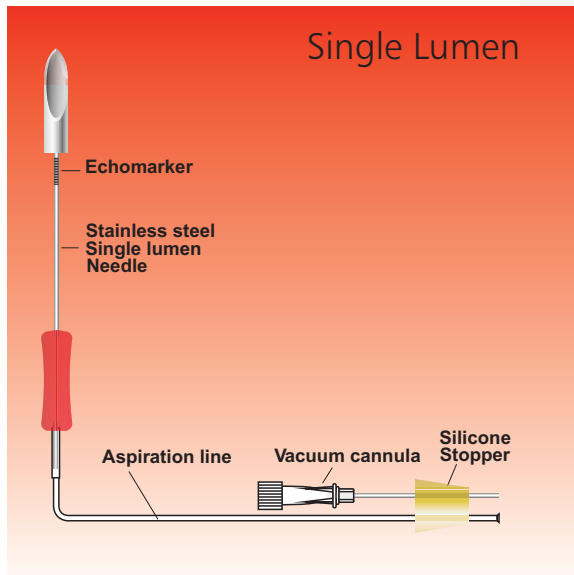


# OVUM PICK-UP NEEDLE

## Ovum Pick-up Needle - Double Lumen and Single Lumen

GTA Stainless steel ovum pick up needle is especially designed to harvest ovocyte from follicles.

GTA' SLD is available in two different configurations: single lumen or double lumen (to flush or aspirate without any other adjustment).



High resolution echogenic tip.

Handle for easy control and orientation of the needle point.

The triple sharpned point assures easy and smooth penetration of ovarian stroma.

Tubing set with luer lock to connect the tube to the vacum regulator.

Flushing line (Double Lumen).

Order code	Deception Ga x cm	Pcs Per box
SLD 1628	Single Lumen 16ga x 28cm	10
SLD 1632	Single Lumen 16ga x 32cm	10
SLD 1828	Single Lumen 18ga x 28cm	10
SLD 1832	Single Lumen 18ga x 32cm	10

Single Lumen

Order code	Deception Ga x cm	Pcs Per box
SLD 1628D	Double Lumen 16ga x 28cm	10
SLD 1632D	Double Lumen 16ga x 32cm	10
SLD 1828D	Double Lumen 18ga x 28cm	10
SLD 1832D	Double Lumen 18ga x 32cm	10

Double Lumen

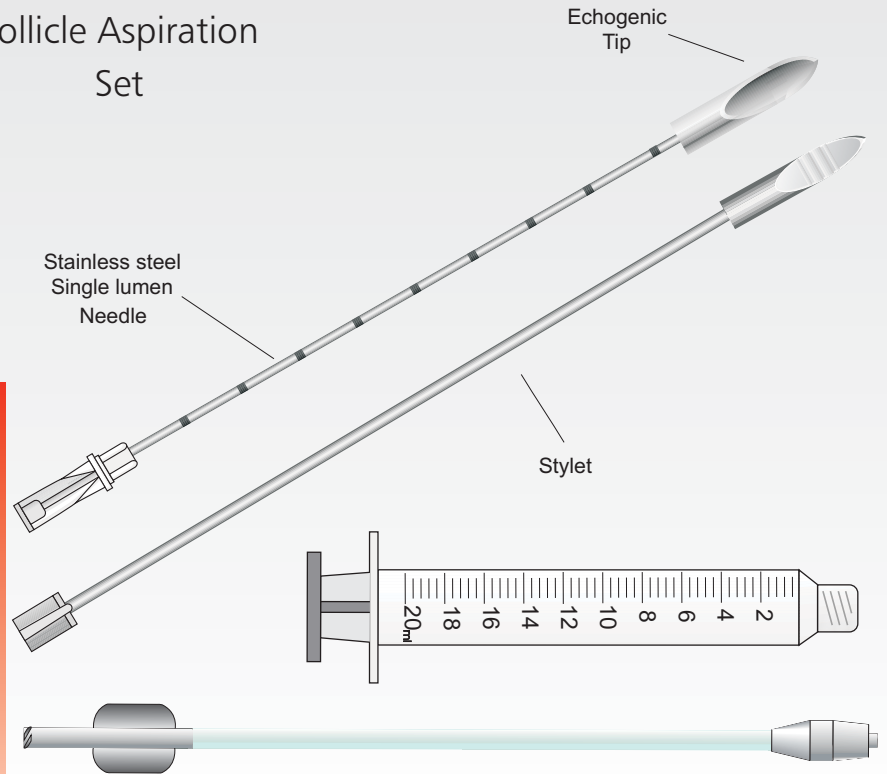
On request it is possible to order needles with different lengths and diameters

# FOLLICLE ASPIRATION SET AND NEEDLE

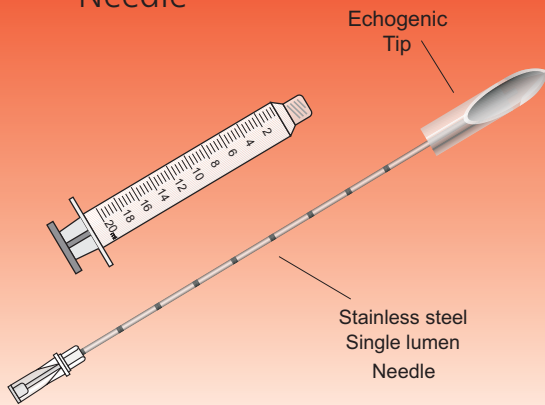
The GTA Follicle Aspiration Set has been developed for oocyte retrieval through the aspiration of the follicular fluid.

Connecting the stainless steel needle to the connecting tube, the follicular fluid will be aspirated into a syringe.

## Follicle Aspiration Set



## Follicle Aspiration Needle



The GTA Follicle Aspiration Needle is especially designed for transvaginal puncture of follicles in order to retrieve oocytes.

A luer attachment provides for easy connection between needle and syringe.

## Follicle Aspiration Set

Order code	Description ga x cm	Tubing Length cm	Pcs Per box
FGTC 1725	17ga x 25cm	40	10
FGTC 1730	17ga x 30cm	40	10
FGTC 1625	16ga x 25cm	40	10
FGTC 1630	16ga x 30cm	40	10
FGTC 1635	16ga x 35cm	40	10

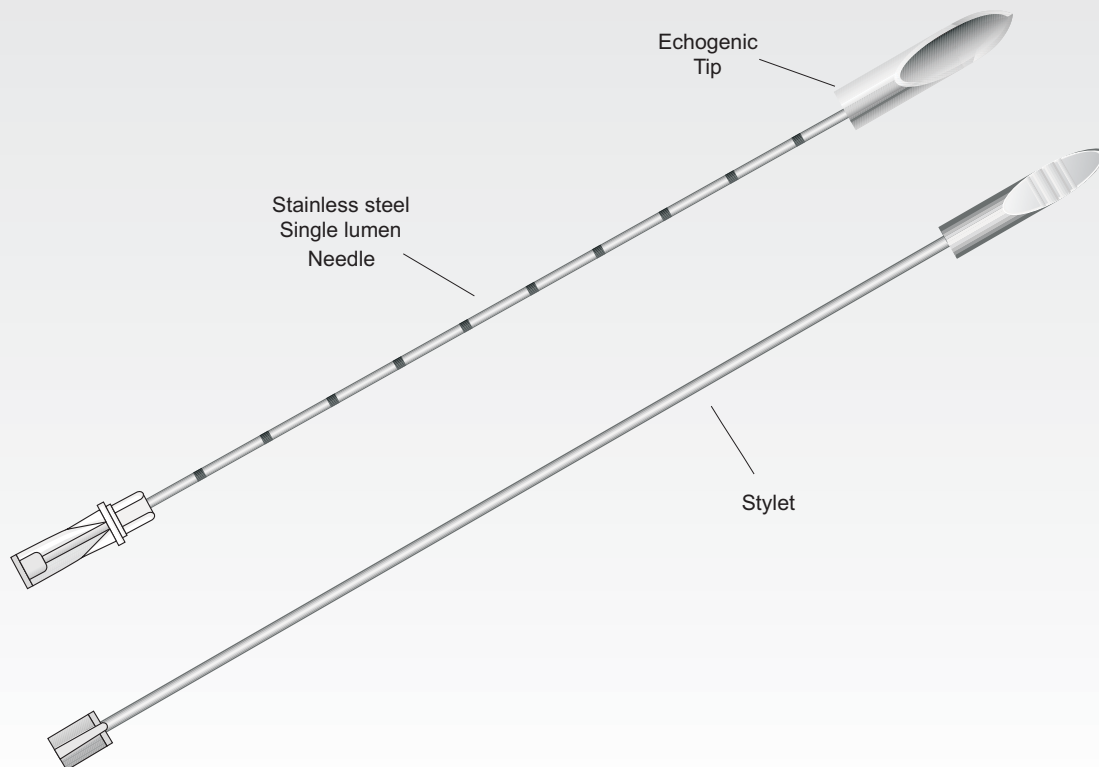
*On request it is possible to order needles with different lengths and diameters*

## Follicle Aspiration Needle

Order code	Description ga x cm	Pcs Per box
FGT 1830	18ga x 30cm	10
FGT 1725	17ga x 25cm	10
FGT 1730	17ga x 30cm	10
FGT 1625	16ga x 25cm	10
FGT 1630	16ga x 30cm	10

*On request it is possible to order needles with different lengths and diameters*

# NEEDLE FOR AMNIOCENTESIS



Issuing Body: COM - May '04 Last Revision: '00

Especially designed for ultra-sound guided amniocentesis

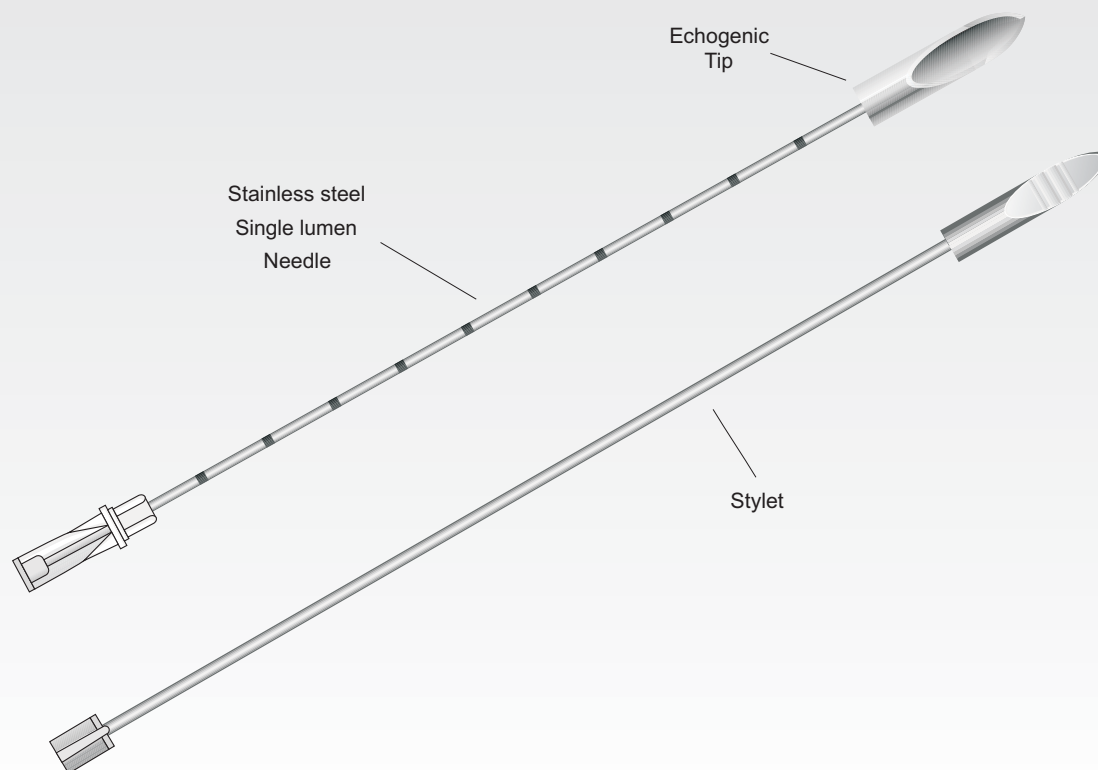
The needle is made of high quality stainless steel, has an echogenic tip and luer lock connection and the perfect length (180 or 140) for use with a needle guide

## Needle for Amniocentesis

Order code	Description ga x cm	Pcs Per box
UATT 2314	23ga x 14cm	10
UATT 2114	21ga x 14cm	10
UATT 2118	21ga x 18cm	10

*On request it is possible to order needles with different lengths and diameters*

# **CHORION BIOPSY NEEDLE**



Issuing Body: COM - May '04 Last Revision: '00

This stainless steel needle has been developed to execute ultra-sound guided chorion biopsy

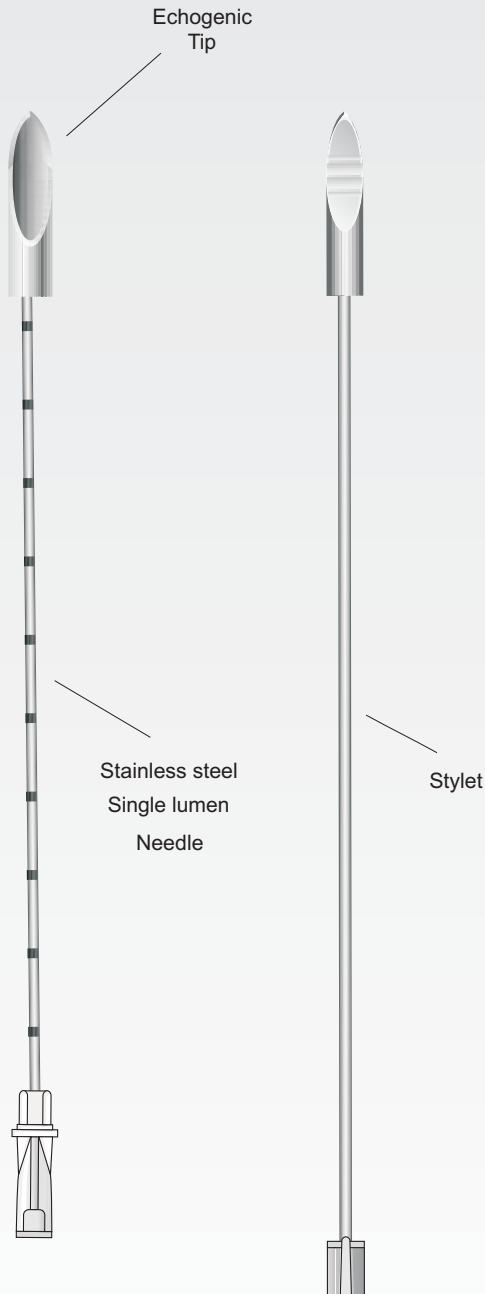
The GTA Chorion Biopsy Needle is provided with stylet, echogenic tip and luer lock connection for attaching a syringe

## Chorion Biopsy Needle

Order code	Description ga x cm	Pcs Per box
<b>UASS 2015</b>	<b>20ga x 15cm</b>	<b>10</b>
<b>UASS 2018</b>	<b>20ga x 18cm</b>	<b>10</b>
<b>UASS 2030</b>	<b>20ga x 30cm</b>	<b>10</b>

*On request it is possible to order needles with different lengths and diameters*

# NEEDLE FOR CYST PUNCTURE



The GTA Needle for Cyst Puncture is designed to perform ultrasound-guided puncture of intra-abdominal cysts

This needle is supplied with a stylet, echogenic tip and a luer lock which allows an easy connection to the syringe

## Needle for Cyst Puncture

Order code	Description ga x cm	Pcs Per box
SOL 1814	18ga x 14cm	10
SOL 1825	18ga x 25cm	10
SOL 1830	18ga x 30cm	10
SOL 1835	18ga x 35cm	10
SOL 1730	17ga x 30cm	10
SOL 1625	16ga x 25cm	10
SOL 1630	16ga x 30cm	10

*On request it is possible to order needles with different lengths and diameters*